

Traffic Statistics - December 2016



hamburg-airport.de

	December			January - December			12 months to date	
	2016	2015	% change	2016	2015	% change		%
Passengers								
Total (commercial)	1.196.374	1.069.398	+ 11,9	16.223.918	15.610.054	+ 3,9		+ 3,9
Volume	1.194.544	1.067.697	+ 11,9	16.194.176	15.586.283	+ 3,9		+ 3,9
Scheduled and charter traffic	1.193.904	1.067.143	+ 11,9	16.181.549	15.573.459	+ 3,9		+ 3,9
other commercial traffic	640	554	+ 15,5	12.627	12.824	- 1,5		- 1,5
Transit	1.830	1.701	+ 7,6	29.742	23.771	+ 25,1		+ 25,1
Aircraft movements								
Total	11.735	11.157	+ 5,2	160.642	158.390	+ 1,4		+ 1,4
Commercial traffic	10.846	10.129	+ 7,1	145.265	143.190	+ 1,4		+ 1,4
Scheduled and charter traffic	10.643	9.911	+ 7,4	140.839	139.365	+ 1,1		+ 1,1
of which cargo	49	51	- 3,9	624	644	- 3,1		- 3,1
Other commercial traffic	203	218	- 6,9	4.426	3.825	+ 15,7		+ 15,7
Non-commercial traffic	889	1.028	- 13,5	15.377	15.200	+ 1,2		+ 1,2
Seating capacity								
Commercial traffic	1.636.020	1.469.060	+ 11,4	21.227.193	20.559.035	+ 3,2		+ 3,2
Scheduled and charter traffic	1.634.156	1.467.290	+ 11,4	21.191.642	20.531.639	+ 3,2		+ 3,2
MTOM (in t total)								
Total	770.612	708.328	+ 8,8	10.027.690	9.807.875	+ 2,2		+ 2,2
Commercial traffic	754.995	691.511	+ 9,2	9.814.885	9.558.298	+ 2,7		+ 2,7
Scheduled and charter traffic	753.438	689.865	+ 9,2	9.788.120	9.533.914	+ 2,7		+ 2,7
Cargo (t)								
Air cargo total (t)	5.568	4.489	+ 24,0	65.557	52.658	+ 24,5		+ 24,5
Cargo transshipment total	5.568	4.489	+ 24,0	65.547	52.656	+ 24,5		+ 24,5
Aircraft cargo transshipment	3.093	2.857	+ 8,2	35.284	31.292	+ 12,8		+ 12,8
Road cargo transshipment	2.475	1.632	+ 51,7	30.259	21.365	+ 41,6		+ 41,6
Total unloaded	2.515	2.025	+ 24,2	32.571	25.506	+ 27,7		+ 27,7
Total loaded	3.053	2.464	+ 23,9	32.975	27.150	+ 21,5		+ 21,5
Transit	0	0	+	8	0	+		+
Key ratios								
Load factor – passenger traffic	73,2	72,9	+ 0,3 PP	76,6	76,0	+ 0,5 PP		+ 0,5 PP
Scheduled and charter traffic	73,3	73,0	+ 0,3 PP	76,6	76,1	+ 0,6 PP		+ 0,6 PP
Passengers / aircraft movement	111,0	106,3	+ 4,4	112,4	109,7	+ 2,5		+ 2,4
Scheduled and charter traffic	113,0	108,6	+ 4,1	115,8	112,6	+ 2,9		+ 2,9
MTOM / commercial traffic	69,6	68,3	+ 2,0	67,6	66,8	+ 1,2		+ 1,2
Scheduled and charter traffic	70,8	69,6	+ 1,7	69,5	68,4	+ 1,6		+ 1,6

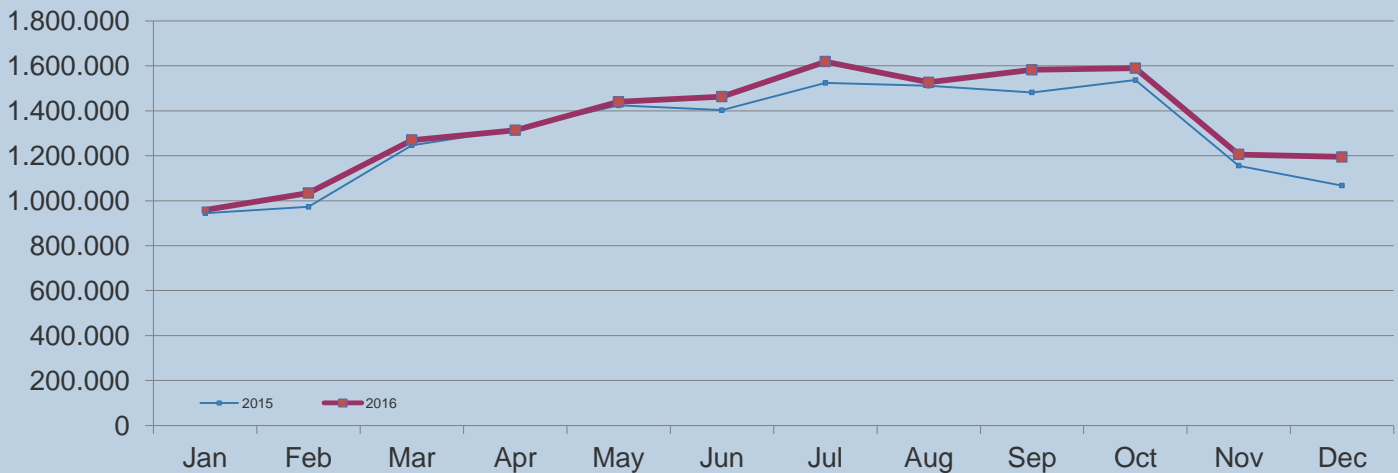
Traffic Statistics – December 2016



hamburg-airport.de

	November			January - November			12 months to date
	2016	2015	% change	2016	2015	% change	%
Passengers							
Volume	1.194.544	1.067.697	+ 11,9	16.194.176	15.586.283	+ 3,9	+ 3,9
Aircraft movements							
Commercial traffic	10.846	10.129	+ 7,1	145.265	143.190	+ 1,4	+ 1,4

Passengers



Aircraft movements

