

Traffic Statistics - September 2017



hamburg-airport.de

	September			January - September			12 months to date	
	2017	2016	% change	2017	2016	% change		%
Passengers								
Total (commercial)	1.728.289	1.585.903	+ 9,0	13.430.747	12.229.269	+ 9,8		+ 8,9
Volume	1.724.649	1.582.073	+ 9,0	13.407.816	12.205.184	+ 9,9		+ 9,0
Scheduled and charter traffic	1.723.303	1.580.467	+ 9,0	13.397.984	12.194.859	+ 9,9		+ 9,0
other commercial traffic	1.346	1.606	- 16,2	9.832	10.325	- 4,8		- 1,6
Transit	3.640	3.830	- 5,0	22.931	24.085	- 4,8		- 7,6
Aircraft movements								
Total	14.881	15.198	- 2,1	122.637	122.167	+ 0,4		+ 0,9
Commercial traffic	13.549	13.510	+ 0,3	111.789	109.788	+ 1,8		+ 2,2
Scheduled and charter traffic	13.135	12.995	+ 1,1	108.802	106.108	+ 2,5		+ 2,7
of which cargo	51	56	- 8,9	457	474	- 3,6		- 4,0
Other commercial traffic	414	515	- 19,6	2.987	3.680	- 18,8		- 16,0
Non-commercial traffic	1.332	1.688	- 21,1	10.848	12.379	- 12,4		- 11,3
Seating capacity								
Commercial traffic	2.114.498	1.962.065	+ 7,8	17.274.988	15.914.008	+ 8,6		+ 7,9
Scheduled and charter traffic	2.111.296	1.958.050	+ 7,8	17.249.886	15.885.113	+ 8,6		+ 7,9
MTOM (in t total)								
Total	980.150	921.706	+ 6,3	8.054.737	7.530.121	+ 7,0		+ 6,2
Commercial traffic	961.789	900.712	+ 6,8	7.883.375	7.372.847	+ 6,9		+ 6,3
Scheduled and charter traffic	959.187	897.938	+ 6,8	7.864.345	7.351.613	+ 7,0		+ 6,3
Cargo (t)								
Air cargo total (t)	6.427	6.486	- 0,9	54.447	46.953	+ 16,0		+ 20,2
Cargo transshipment total	6.426	6.485	- 0,9	54.443	46.944	+ 16,0		+ 20,2
Aircraft cargo transshipment	3.220	3.332	- 3,4	27.448	25.745	+ 6,6		+ 8,1
Road cargo transshipment	3.206	3.153	+ 1,7	26.993	21.197	+ 27,3		+ 35,8
Total unloaded	3.389	3.689	- 8,1	27.052	23.614	+ 14,6		+ 19,6
Total loaded	3.037	2.797	+ 8,6	27.391	23.329	+ 17,4		+ 20,7
Transit	1	0	+	5	8	- 37,5		- 37,5
Key ratios								
Load factor – passenger traffic	81,9	81,0	+ 0,9 PP	77,9	77,0	+ 0,9 PP		+ 0,7 PP
Scheduled and charter traffic	82,0	81,1	+ 0,9 PP	77,9	77,1	+ 0,9 PP		+ 0,7 PP
Passengers / aircraft movement	128,3	118,2	+ 8,6	120,8	112,1	+ 7,8		+ 6,6
Scheduled and charter traffic	132,3	122,7	+ 7,8	124,1	115,9	+ 7,1		+ 6,0
MTOM / commercial traffic	71,0	66,7	+ 6,5	70,5	67,2	+ 5,0		+ 4,0
Scheduled and charter traffic	73,0	69,1	+ 5,7	72,3	69,3	+ 4,3		+ 3,5

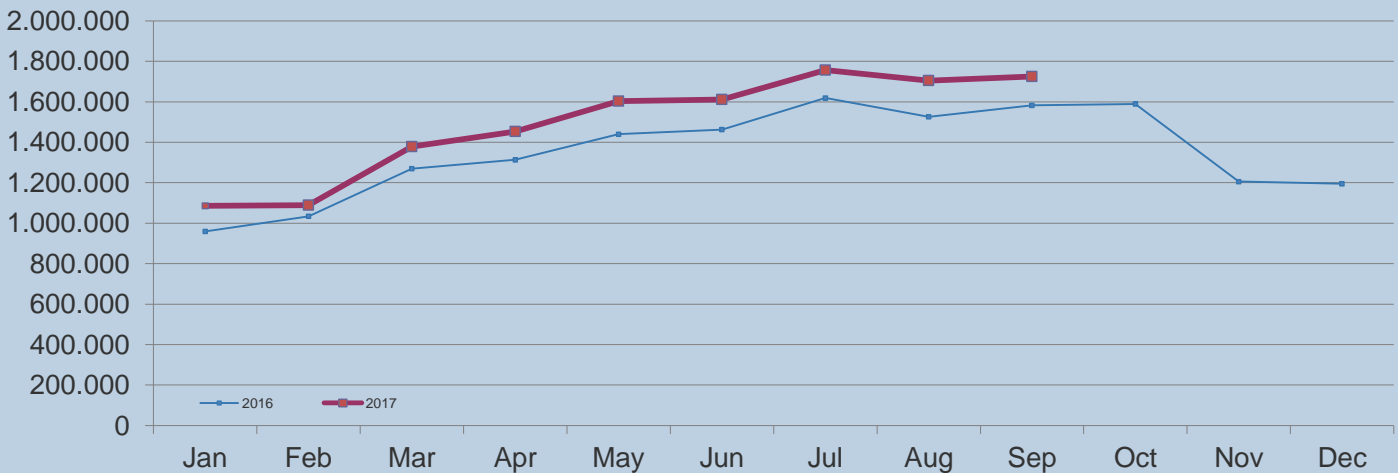
Traffic Statistics – September 2017



hamburg-airport.de

	September			January - September			12 months to date
	2017	2016	% change	2017	2016	% change	%
Passengers							
Volume	1.724.649	1.582.073	+ 9,0	13.407.816	12.205.184	+ 9,9	+ 9,0
Aircraft movements							
Commercial traffic	13.549	13.510	+ 0,3	111.789	109.788	+ 1,8	+ 2,2

Passengers



Aircraft movements

