

Traffic Statistics - October 2017



hamburg-airport.de

	October			January - October			12 months to date	
	2017	2016	% change	2017	2016	% change		%
Passengers								
Total (commercial)	1.720.302	1.591.307	+ 8,1	15.151.049	13.820.576	+ 9,6		+ 9,4
Volume	1.717.153	1.589.012	+ 8,1	15.124.969	13.794.196	+ 9,6		+ 9,4
Scheduled and charter traffic	1.716.198	1.588.092	+ 8,1	15.114.182	13.782.951	+ 9,7		+ 9,4
other commercial traffic	955	920	+ 3,8	10.787	11.245	- 4,1		- 2,0
Transit	3.149	2.295	+ 37,2	26.080	26.380	- 1,1		- 3,2
Aircraft movements								
Total	14.596	14.381	+ 1,5	137.233	136.548	+ 0,5		+ 1,1
Commercial traffic	13.384	13.301	+ 0,6	125.173	123.089	+ 1,7		+ 2,2
Scheduled and charter traffic	13.098	12.983	+ 0,9	121.900	119.091	+ 2,4		+ 2,8
of which cargo	48	48	0,0	505	522	- 3,3		- 3,2
Other commercial traffic	286	318	- 10,1	3.273	3.998	- 18,1		- 17,5
Non-commercial traffic	1.212	1.080	+ 12,2	12.060	13.459	- 10,4		- 9,6
Seating capacity								
Commercial traffic	2.129.969	1.988.139	+ 7,1	19.404.957	17.902.147	+ 8,4		+ 8,4
Scheduled and charter traffic	2.127.474	1.985.360	+ 7,2	19.377.360	17.870.473	+ 8,4		+ 8,5
MTOM (in t total)								
Total	984.557	937.176	+ 5,1	9.039.294	8.467.297	+ 6,8		+ 6,6
Commercial traffic	961.623	913.808	+ 5,2	8.844.998	8.286.655	+ 6,7		+ 6,7
Scheduled and charter traffic	959.589	911.540	+ 5,3	8.823.934	8.263.153	+ 6,8		+ 6,7
Cargo (t)								
Air cargo total (t)	6.763	6.691	+ 1,1	61.210	53.644	+ 14,1		+ 16,4
Cargo transshipment total	6.761	6.690	+ 1,1	61.204	53.634	+ 14,1		+ 16,4
Aircraft cargo transshipment	3.159	3.289	- 4,0	30.607	29.034	+ 5,4		+ 6,0
Road cargo transshipment	3.603	3.401	+ 5,9	30.596	24.598	+ 24,4		+ 29,3
Total unloaded	3.658	3.291	+ 11,1	30.710	26.905	+ 14,1		+ 16,3
Total loaded	3.104	3.399	- 8,7	30.495	26.728	+ 14,1		+ 16,4
Transit	2	0	+	7	8	- 12,5		- 12,5
Key ratios								
Load factor – passenger traffic	80,9	80,2	+ 0,8 PP	78,2	77,3	+ 0,9 PP		+ 0,7 PP
Scheduled and charter traffic	81,0	80,2	+ 0,7 PP	78,3	77,4	+ 0,8 PP		+ 0,6 PP
Passengers / aircraft movement	129,2	120,2	+ 7,5	121,7	113,0	+ 7,8		+ 7,0
Scheduled and charter traffic	132,0	123,1	+ 7,2	124,9	116,7	+ 7,1		+ 6,3
MTOM / commercial traffic	71,8	68,7	+ 4,6	70,7	67,3	+ 5,0		+ 4,4
Scheduled and charter traffic	73,3	70,2	+ 4,3	72,4	69,4	+ 4,3		+ 3,8

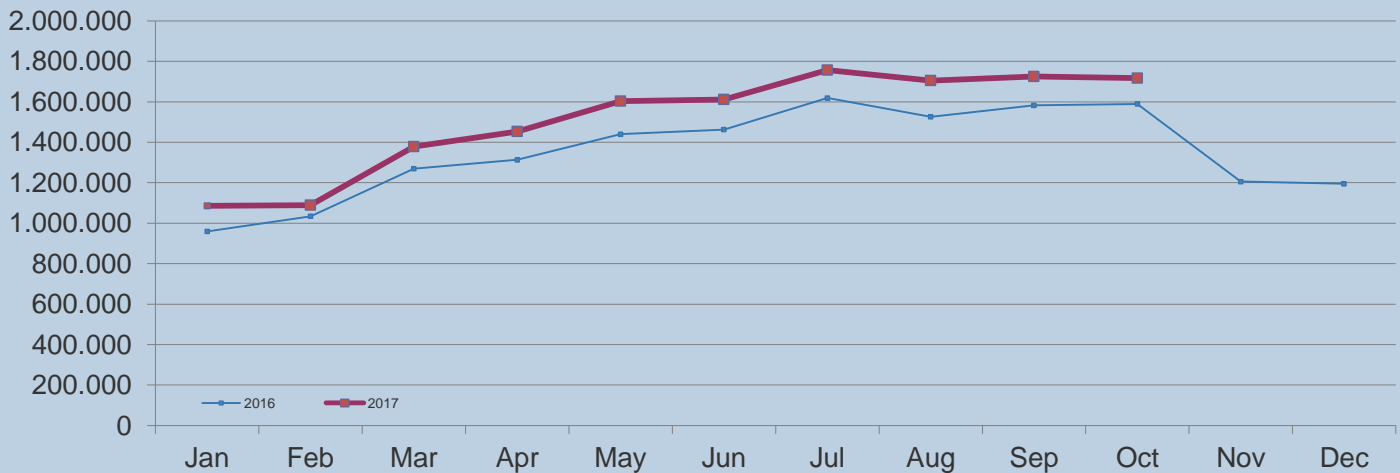
Traffic Statistics – October 2017



hamburg-airport.de

	October			January - October			12 months to date
	2017	2016	% change	2017	2016	% change	%
Passengers							
Volume	1.717.153	1.589.012	+ 8,1	15.124.969	13.794.196	+ 9,6	+ 9,4
Aircraft movements							
Commercial traffic	13.384	13.301	+ 0,6	125.173	123.089	+ 1,7	+ 2,2

Passengers



Aircraft movements

