

# Traffic Statistics - November 2017



hamburg-airport.de

	November			January - November			12 months to date	
	2017	2016	% change	2017	2016	% change		%
<b>Passengers</b>								
Total (commercial)	<b>1.268.397</b>	1.206.968	+ 5,1	<b>16.419.446</b>	15.027.544	+ 9,3		+ 9,4
Volume	<b>1.266.660</b>	1.205.436	+ 5,1	<b>16.391.629</b>	14.999.632	+ 9,3		+ 9,5
Scheduled and charter traffic	<b>1.265.860</b>	1.204.694	+ 5,1	<b>16.380.042</b>	14.987.645	+ 9,3		+ 9,5
other commercial traffic	<b>800</b>	742	+ 7,8	<b>11.587</b>	11.987	- 3,3		- 2,5
Transit	<b>1.737</b>	1.532	+ 13,4	<b>27.817</b>	27.912	- 0,3		+ 0,1
<b>Aircraft movements</b>								
Total	<b>11.655</b>	12.359	- 5,7	<b>148.888</b>	148.907	- 0,0		+ 0,3
Commercial traffic	<b>10.752</b>	11.330	- 5,1	<b>135.925</b>	134.419	+ 1,1		+ 1,5
Scheduled and charter traffic	<b>10.490</b>	11.105	- 5,5	<b>132.390</b>	130.196	+ 1,7		+ 2,1
of which cargo	<b>54</b>	53	+ 1,9	<b>559</b>	575	- 2,8		- 2,9
Other commercial traffic	<b>262</b>	225	+ 16,4	<b>3.535</b>	4.223	- 16,3		- 15,8
Non-commercial traffic	<b>903</b>	1.029	- 12,2	<b>12.963</b>	14.488	- 10,5		- 10,7
<b>Seating capacity</b>								
Commercial traffic	<b>1.691.451</b>	1.689.026	+ 0,1	<b>21.096.408</b>	19.591.173	+ 7,7		+ 7,9
Scheduled and charter traffic	<b>1.689.002</b>	1.687.013	+ 0,1	<b>21.066.362</b>	19.557.486	+ 7,7		+ 8,0
<b>MTOM (in t total)</b>								
Total	<b>792.573</b>	789.781	+ 0,4	<b>9.831.867</b>	9.257.078	+ 6,2		+ 6,4
Commercial traffic	<b>772.648</b>	773.235	- 0,1	<b>9.617.646</b>	9.059.890	+ 6,2		+ 6,4
Scheduled and charter traffic	<b>770.400</b>	771.529	- 0,1	<b>9.594.334</b>	9.034.682	+ 6,2		+ 6,4
<b>Cargo (t)</b>								
Air cargo total (t)	<b>6.823</b>	6.345	+ 7,5	<b>67.939</b>	59.989	+ 13,3		+ 14,0
Cargo transshipment total	<b>6.822</b>	6.345	+ 7,5	<b>67.932</b>	59.979	+ 13,3		+ 14,0
Aircraft cargo transshipment	<b>3.137</b>	3.158	- 0,7	<b>33.744</b>	32.192	+ 4,8		+ 5,1
Road cargo transshipment	<b>3.686</b>	3.186	+ 15,7	<b>34.188</b>	27.784	+ 23,0		+ 24,6
Total unloaded	<b>3.597</b>	3.151	+ 14,1	<b>34.307</b>	30.056	+ 14,1		+ 14,8
Total loaded	<b>3.226</b>	3.194	+ 1,0	<b>33.627</b>	29.922	+ 12,4		+ 13,3
Transit	<b>0</b>	0	+	<b>7</b>	8	- 12,5		- 12,5
<b>Key ratios</b>								
Load factor – passenger traffic	<b>75,1</b>	71,6	+ 3,5 PP	<b>78,0</b>	76,8	+ 1,1 PP		+ 1,0 PP
Scheduled and charter traffic	<b>75,2</b>	71,6	+ 3,6 PP	<b>78,0</b>	76,9	+ 1,1 PP		+ 1,0 PP
Passengers / aircraft movement	<b>118,7</b>	107,2	+ 10,8	<b>121,5</b>	112,5	+ 8,0		+ 7,8
Scheduled and charter traffic	<b>121,6</b>	109,3	+ 11,3	<b>124,7</b>	116,1	+ 7,4		+ 7,2
MTOM / commercial traffic	<b>71,9</b>	68,2	+ 5,3	<b>70,8</b>	67,4	+ 5,0		+ 4,8
Scheduled and charter traffic	<b>73,4</b>	69,5	+ 5,7	<b>72,5</b>	69,4	+ 4,4		+ 4,2

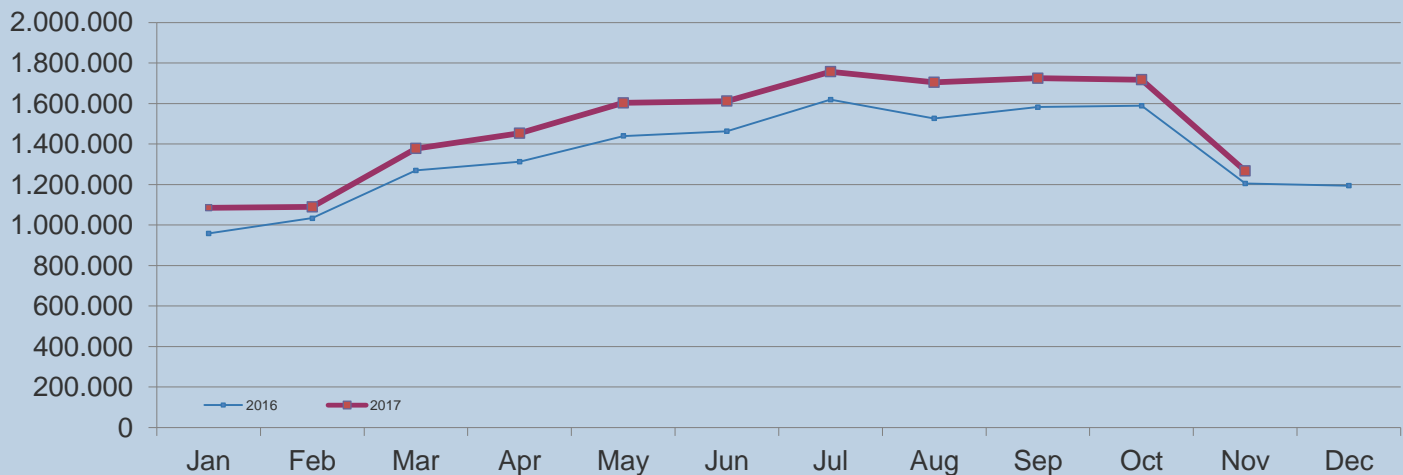
# Traffic Statistics – November 2017



[hamburg-airport.de](http://hamburg-airport.de)

	November			January - November			12 months to date
	2017	2016	% change	2017	2016	% change	%
<b>Passengers</b>							
Volume	<b>1.266.660</b>	<b>1.205.436</b>	+ 5,1	<b>16.391.629</b>	<b>14.999.632</b>	+ 9,3	+ 9,5
<b>Aircraft movements</b>							
Commercial traffic	<b>10.752</b>	<b>11.330</b>	- 5,1	<b>135.925</b>	<b>134.419</b>	+ 1,1	+ 1,5

## Passengers



## Aircraft movements

